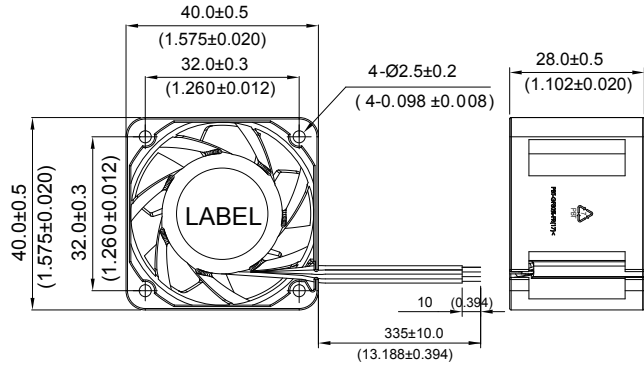


# TFA 40 x 40 x 28.0 MM SERIES

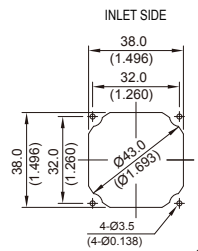
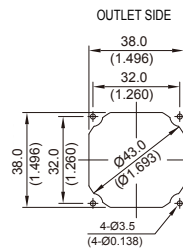
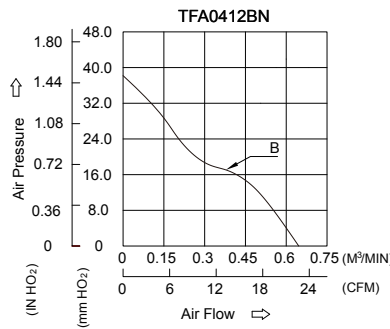
## DIMENSIONS DRAWING



- \* Bearing Type  
Ball Bearings
- \* Material  
Impeller : Plastic (UL 94V-0)  
Frame : Plastic (UL 94V-0)
- \* Lead Wires :  
UL 1061 AWG #26 OR  
Equivalent  
Red Wire Positive (+)  
Black Wire Negative (-)  
Blue Wire (F00)  
Yellow Wire (PWM)
- \* Weight : 47g (1.65 oz)

## P & Q CURVE (AT RATED VOLTAGE)

## MOUNTING PANEL CUTOUT



MODEL		Rated Voltage	Operating Voltage Range	Rated Current	Rated Input Power	Speed	Maximum Air Flow		Maximum Air Pressure		Noise
PART NO.	FUNCTION	VDC	VDC	Amp	Watt	R.P.M.	m <sup>3</sup> /min	CFM	mmH <sub>2</sub> O	IN H <sub>2</sub> O	dB-A
TFA0412BN	PWM / F00	12	8.0 to 14.0	0.42	5.04	15600	0.630	22.20	38.19	1.500	50.8

\* The max. air flow and the speed are measured in free air ; max. air pressure is measured at zero air flow.  
 \* Noise is measured in anechoic chamber in free air, one meter from intake side.  
 \* All readings are typical values at rated voltage.  
 \* Specifications are subject to change without notice.